

Rybit



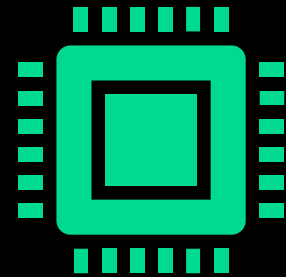
Connecting the
Last Mile

The Rybit IoT Platform

An industry-leading fleet management platform, powered by IoT

Comprehensive IoT Applications

Our B2B solutions are designed to meet the needs of last-mile delivery businesses.



Customizable Software



Integrated into our software, we provide fleet performance analysis, fleet lifecycle management, in-app payment and various features to support your business.

The Rybit IoT Platform

An industry-leading fleet management platform, powered by IoT

Business Model Support

Our proprietary IoT technology enables functions such as vehicle tracking, vehicle behavior analysis, error-monitoring, and anti-theft.



Our "Cable-Less" IoT Vehicle Tracker

Battery model: CR2032
Working Standby: 24 months
No cables
Size: Diameter 32.6mm
Thickness: 9mm
IP67 waterproof and dustproof

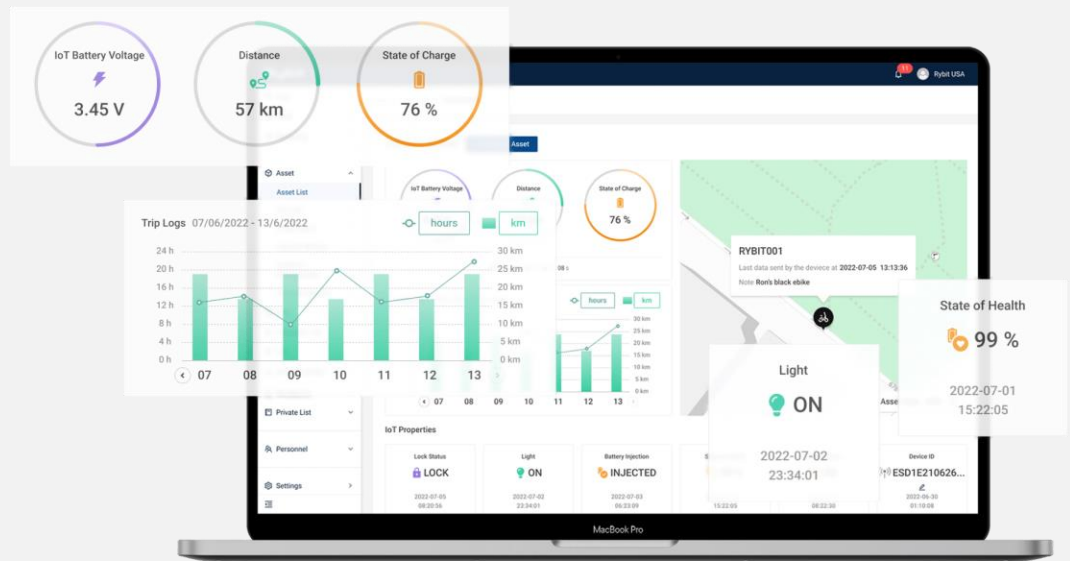
The Rybit IoT Platform

An industry-leading fleet management platform, powered by IoT

Track all the information you need to optimize your delivery service and to take your business to the next level.

Actionable Data

- Distance
- Battery Life
- Error Detection
- Rider Behavior Analysis
- Delivery Status
- Vehicle Security



Join over 1,000 companies working with us today.



For more information on the Rybit Platform visit us [here](#).

The Rybit Gen 3

The ultimate riding machine.

The world's strongest eBike purpose-built for delivery.



The Rybit Gen 3

The ultimate riding machine.

The world's strongest eBike purpose-built for delivery.

Flexible Storage Racks to Carry Anything

Enhanced frame built to withstand the road. Extended front and rear carriers for delivery boxes of any size.



Powerful Lighting

Powerful light beam at 30 Lux with modern and compact size; GEN3 is equipped with two headlamps that provide vision at night.

The articulation of engineering and design makes it possible to seamlessly integrate high quality technical components into the GEN3.



The Rybit Gen 3

The ultimate riding machine.

The world's strongest eBike purpose-built for delivery.

Powerful Motor

Powerful motor to conquer any urban environment. Motor ranging from 250W to 750W depending on location.



Built-In Bike Lock System

Commonly referred to as u-lock, o-lock, wheel lock or frame lock; permanently attached to the GEN3. The key stays in lock when the eBike is unlocked making it difficult to forget.

IoT-enabled models come with front hub auto-locking feature.

Ready to reduce your environmental footprint and take your delivery operations to the next level?

Join over 1,000 companies working with us today.



Domino's

Flink



SUB

AY

Please reach us using our contact page at:
[RYBIT | Sign up your Business Today](#)

Check out our platform at:
[RYBIT | Connecting the Last Mile](#)